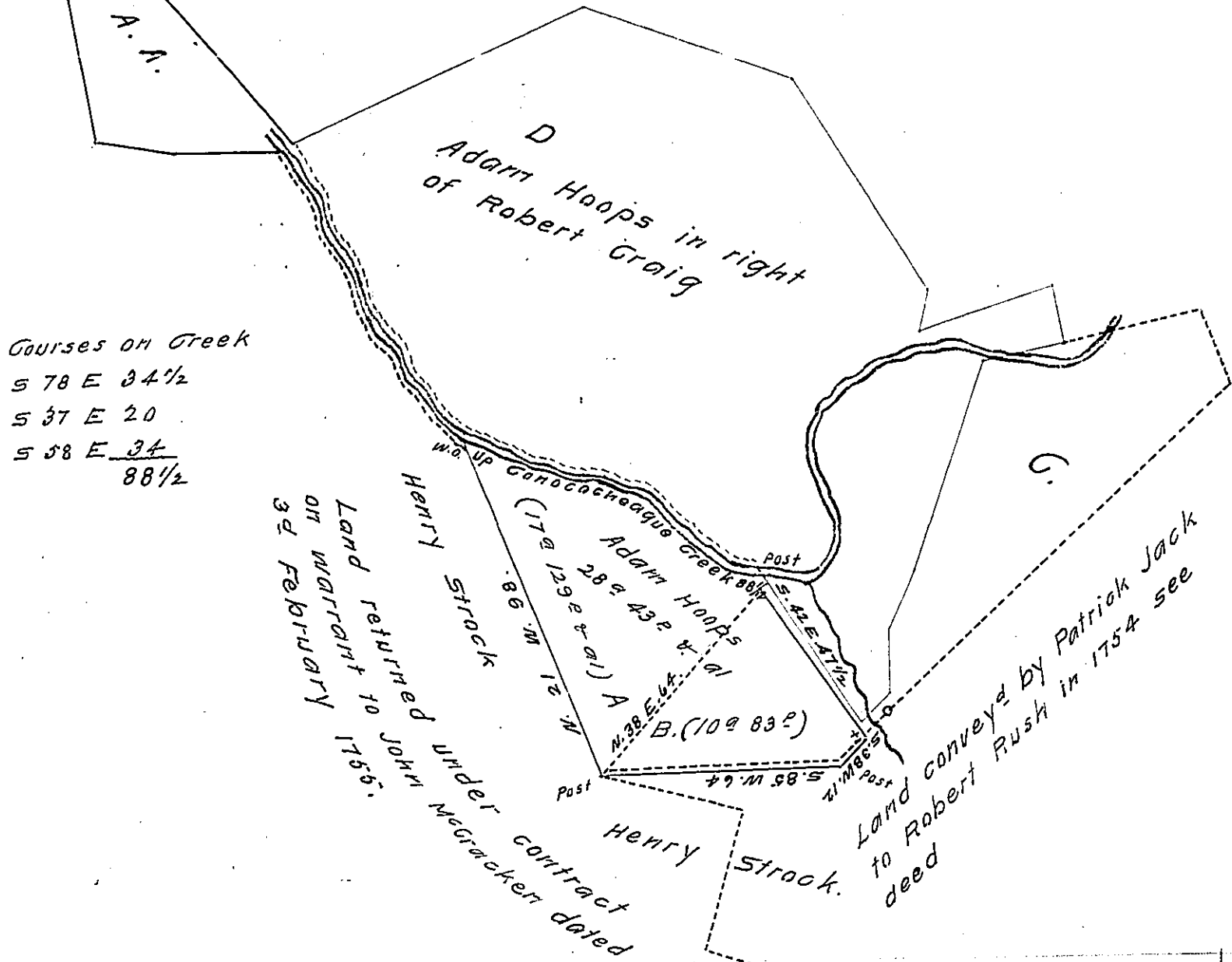


FORM NO 1.



Courses on Creek  
 S 78 E 34 1/2  
 S 37 E 20  
 S 38 E 34  
 88 1/2

Draught of a tract of land situate in Guilford township in the County of Franklin, containing twenty eight acres forty three perches and allowance of six per cent for roads &c. Surveyed 2d October 1828. In pursuance of a contract with the board of property for carrying into effect the several Acts of Assembly relating to unpatented lands under proprietary rights &c. And by virtue of a warrant dated 13th April 1754 granted to Adam Hoops for 20 acres "joining" Robert Rush and John McCracken at Canococheague Creek in Guilford township.

To Jacob Spangler, Esq<sup>r</sup>  
 Surveyor General

W<sup>m</sup> S. Davis } Contractors  
 William Hamilton }

D. Huston, Patd.  
 R. Craig, Patd in part.

Report.

The above tract is covered by the following office rights to wit, The part marked A. separated by dotted line is included with A.A. & surveyed the 12 Sept 1809, on warrant to Daniel Huston, dated 29 Augt 1809, & sd to be patented.

Note - The Red lined figure D. represents a survey made 3th April 1763, for Adam Hoops, on warrant to Robert Craig, dated 4 June 1762 - And afterwards to wit on the 14 Jan<sup>y</sup> 1791, A resurvey was made on Craig's warrant extending the lines so as to include the figure marked B. and the dotted figure G. which latter survey is returned to land office - Note - No evidence of a previous survey on Hoops warrant or of any person claiming under the same.

Henry Strack, owner & occupier under the Adverse Titles mentioned.

IN TESTIMONY that the above is a copy of the original remaining on file in the Department of Internal Affairs of Pennsylvania, made conformably to an Act of Assembly approved the 16th day of February, 1833, I have hereunto set my Hand and caused the Seal of said Department to be affixed at Harrisburg, this nineteenth day of November 1908

*Henry Strack*  
 Secretary of Internal Affairs.